



Home » Internet » Running a Website » Running a Website Basics » How to Set Up a Website in IIS

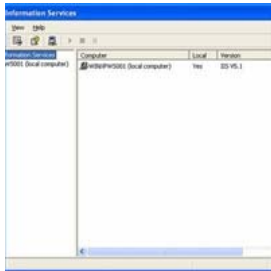
# How to Set Up a Website in IIS



By Josienita Borlongan  
eHow Contributing Writer

Contributor

Article Rating: ★★★★★ (2 Ratings)



IIS

If you are trying to pursue a computer-related career, one of the things you will learn is how to set up or configure a website. Part of a systems administrator's job, especially those who specialize in website development and Internet security, is to learn how to configure and maintain a website through IIS. IIS or Internet Information Server, is a [Microsoft product](#) used to build and administer websites. Using IIS will help you manage multiple websites and maintain and troubleshoot problems.

## Instructions

**Difficulty:** Moderate

1. Install IIS. Most servers come with the IIS program pre-installed or enabled. If you are trying to learn about IIS at home and you do not have a server configured with IIS, you can use your PC running Windows XP Professional. Practicing from home can give you the basic knowledge that you can use to administer IIS using Windows Server 2000 and Windows 2003. You would need the Windows XP Installation CD to accomplish this task.



IIS Installation

- Go to "Start" and click on the "Control Panel". Then, click on "Add and Remove Programs". Next, click on the "Add/Remove Windows Components" button. Click on "[Internet](#) information Services" in the Windows Components Wizard window and then click on the "Details" button. This will pop open the Internet Information Services window, which shows all the functions included in the installation. Check the "File Transfer Protocol", click on "OK" and then click on "Next". This will start running the configuration. Then, it will ask you to insert the Windows XP Installer CD.
3. Let the installation complete. Click on "Finish" once done. Run the Windows Update by going to the [Microsoft](#) website to check for current updates to make sure that the IIS you installed will have the latest update and patch. Reboot your computer after running the updates.
4. Go to "Start", "Administrative Tools" and click on "Internet Information Services". This console will help you manage IIS.
5. Right-click on "Web Sites" and click on "Properties". This is where you can set the properties for all of the websites. Go to the "Default Web Site" properties.
6. Go to the "Web Site Identification" section, which allows you to assign an IP address for the web server to serve pages on. Click on the "Advanced" button. Click on "Add" button. Enter the "IP Address" of the URL you are creating, then enter the port number it will listen to in the "TCP Port" box, usually for IIS it is "80" by default. Then, type in the URL of the website in the "Host Header Name" box. Click on "OK".
7. Keep the default or assign the timeout in seconds in the "Connection timeout" box. You can keep the check on the box in front of "HTTP Keep-Alives Enabled". Check on "Enable Logging". When you enable logging on your website, it lets you keep track of where people are coming from and what pages they are viewing. Choose the "W3C Extended Log File Format" from the drop-down menu. Then, click on the "Properties" button.

8. Click on the radio button in front of "Daily" in the "Extended Logging Properties" window. You can change the frequency as desired, whether hourly, daily or weekly, to create new log files and save them. Click on "OK".
9. Return to the "Default Web Site Properties", then go to the "ISAPI Filters" tab. You can either use the default set-up within this tab or add any special requirement that you need. The ISAPI filter performs some special functions as a response to HTTP requests.
0. Go to the "Home Directory" tab. This is where you can set up the path of the contents of your website, such as the root directory; execute permissions such as "Read" or "Write". You can also name the application and apply protection here. "Click on "OK" once done.
1. Go to the "Documents" tab where you can point users to the different pages, folders or sections of the website. Click on "OK".
2. Go to the "Directory Security" tab where you can assign or change the security settings of your site. Click on the "Edit" button to go to the "Authentication Methods" dialog box. This is where you can assign whether you want users to login and use passwords or you can allow "Anonymous Access" depending on your requirements. Click on "OK" once done.
3. Go to the "HTTP Headers" tab to make changes if needed. It is best to leave this in default settings. This tab shows the header information sent to the browser when a user makes a request. Click "OK".
4. Go to the "Custom Errors" tab, which allows you to change how IIS will handle the errors when users try to visit the site. This will be useful when a website is down or having problems by giving the visitors messages, such as "Error 404 Internal Server Error". The errors can help you in troubleshooting problems and finding resolutions. Click "OK".
5. Go to the final tab, which is the "Server Extensions" tab. this is where you can enable the version control, change performance settings, change scripting and change mail settings. Click "OK" and close the IIS window. This completes the website configuration. Test the website if it works by typing the URL on an open browser window.
6. Test your website to ensure that it works without errors by typing it in a browser. If there are errors, troubleshoot using IIS, it is possible that there is a typo or the website is not yet on the enabled state. Check again to make sure that it is.

## Resources

---

- Microsoft IIS system requirements

## Photo Credit

---

